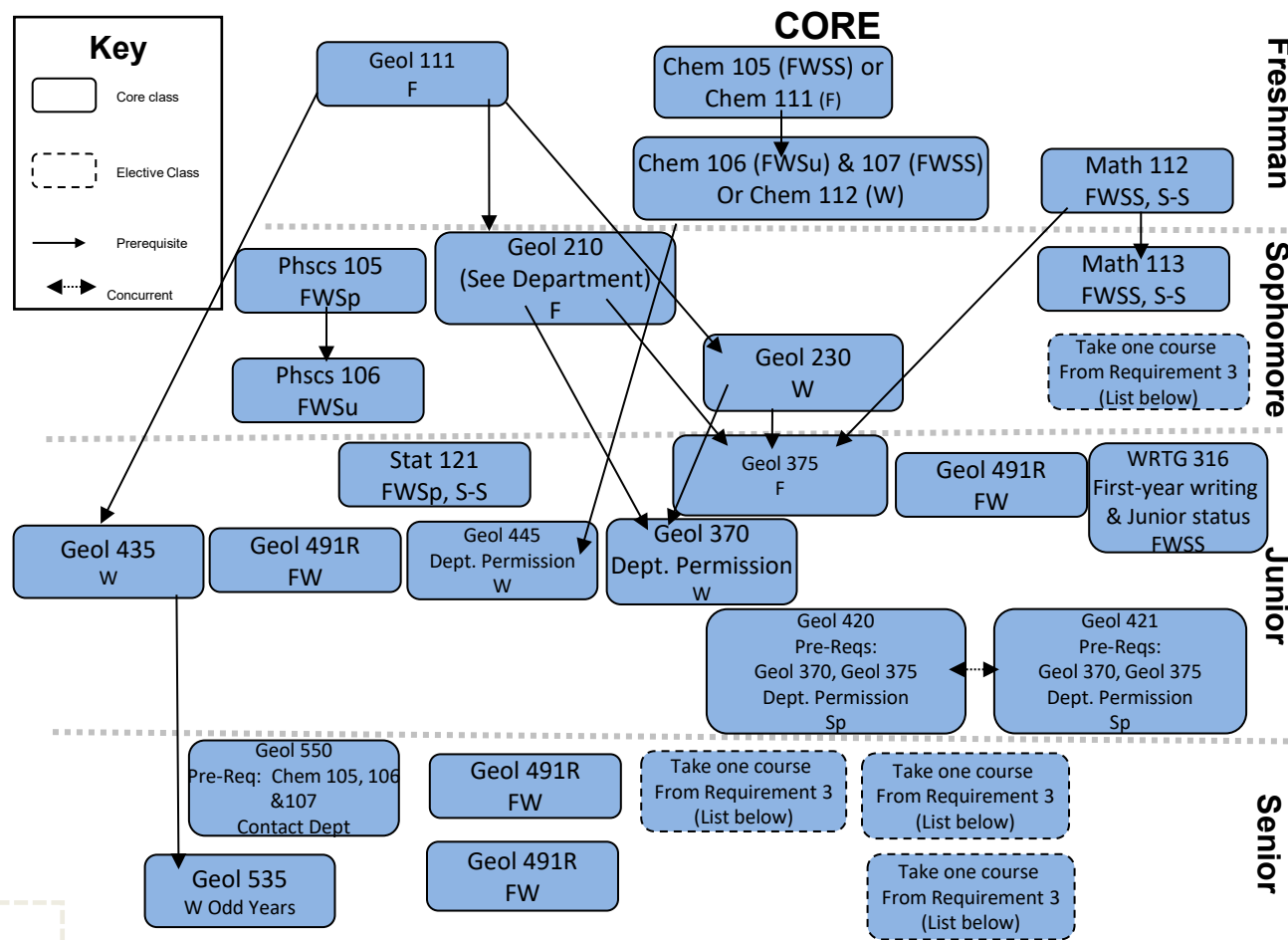


BYU Environmental Geology BS

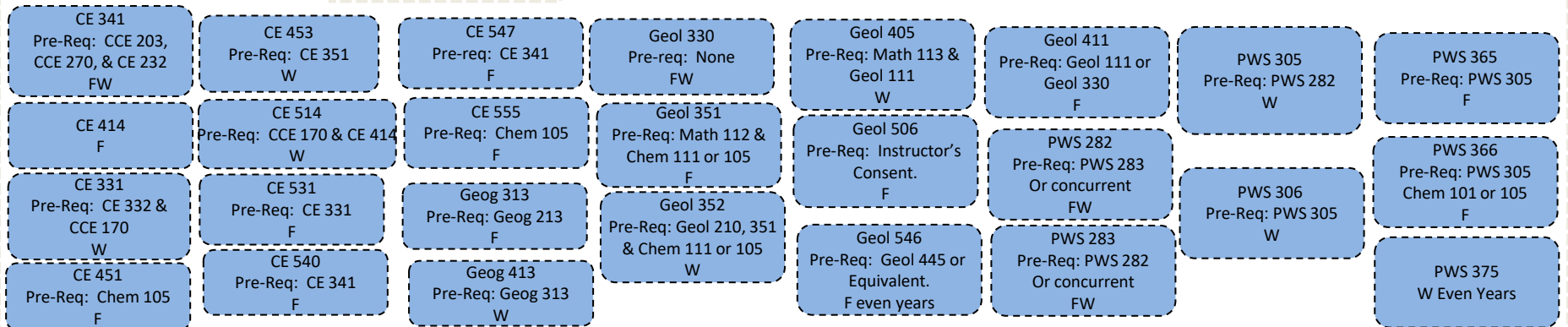
Requirements / Prerequisites
2025-2026 Academic Year

Major (75-80 hours)

- Complete the following: Geol 111, Geol, Geol 210, Geol 230, Geol 370, Geol 375, Geol 420, Geol 421, Geol 435, Geol 445, Geol 535, Geol 550.
- Complete the following (2 credit hours): Geol 491R
- Complete 4 courses from the following: CE 341, CE 414, CE 331, CE 451, CE 453, CE 514, CE 531, CE 540, CE 547, CE 555, GEOG 313, Geog 413, Geol 330, Geol 351, Geol 352, Geol 405, Geol 411, Geol 506, Geol 546, PWS 282, PWS 283, PWS 305, PWS 306, PWS 365, PWS 366, PWS 375.
- Complete either Chem 105, Chem 106, and Chem 107, or Chem 111 and 112.
- Complete the following: WRTG 316, Math 112, Math 113, Phscs 105, Phscs 106, Stat 121.



Requirement 3 Complete Four Courses



F=Fall, W=Winter, Sp=Spring, Su=Summer,
S-S=Spring-Summer, SS=Spring & Summer.

Please Note: When Taught is subject to change. Guide only—please consult MyMAP for full requirements.

Updated 6/24/2025