

Welcome to the

Earth & Space Science Education Major

in the College of Computational, Mathematical, and Physical Sciences

College Advisement Center

Website: <https://science.byu.edu/advisement>

Email: cmsadvising@byu.edu

Phone: 801-422-2674

Office: N-181 ESC

Geological Sciences Department

Website: www.geology.byu.edu

Phone: 801-422-3918

Office: S-389 ESC

Email: geology@byu.edu

Faculty Advisors – Adam Bennion & Duane Merrell

Email: adam_bennion@byu.edu

Phone: 801-422-3095

Office: N-319 ESC

Email: duane_merrell@byu.edu

Phone: 801-422-2255

Office: N-143 ESC

Education Advisement Center

Website: education.byu.edu

Phone: 801-422-3426

Office: 175 MCKB

Email: eac.frontdesk@byu.edu



Educator: Apply to your program at educator.byu.edu. If you have any technical issues, contact the EPP Help Center at 801-422-1190, <https://epp.byu.edu/>. You should plan to have the application completely done by the time you finish the PHY S 276 class.

Club – Geology Club

Advisor: Ron Harris

Phone: 801-422-9264

Office: S-317 ESC

Email: rharris@byu.edu

*Please meet with Dr. Jani Radebaugh soon after entering the major for important information about the course sequencing of Geology electives. Contact information: 801-422-9127, janirad@byu.edu, S-383 ESC. For sequencing of non-geology courses, contact the college advisement center.

Learning outcomes can be found here: <https://learningoutcomes.byu.edu/Courses/program-courses/694020/Earth+%26+Space+Science+Education+BS+/1325>

Things to Know

Resources for Graduation Planning

- Flow Charts and Major Academic Plans (MAPs) can be found here: <https://science.byu.edu/advisement/explore-majors-and-minors>.
- Academic advisors in N-181 ESC will help you understand course sequencing and help you plan classes to efficiently fill requirements. They can also help you with study skills and initial career exploration as well as connecting you with correct resources.
- Plan and register from your plan on MyMAP. Your academic advisor can help you understand how to best utilize this resource.
- Evaluate your current program. Periodically major programs are updated. An academic advisor would be happy to review the differences between the programs with you to help you determine what would be best for you.
- Consider meeting with a faculty advisor in your department. Contact info is found on the first page of this packet.

Tutoring Resources and Research

- Volunteer peer tutors are available through Y Serve if you need help with a class. Also, if you excel in a subject, consider serving your fellow students by becoming a tutor. Find out more here: <https://tutoring.byu.edu/>.
- Many departments provide TA Tutorial Labs and research opportunities. Check your department for details:
 - Chemistry and Biochemistry: C-104 BNSN, 801-422-6261, <https://chem.byu.edu/department/faculty/>
 - Computer Science: 3361 TMCB, 801-422-3027, cs-office@byu.edu
 - Geological Sciences: S-389 ESC, 801-422-3918, geology@byu.edu
 - Mathematics: 275 TMCB, 801-422-2061, office@mathematics.byu.edu
 - Mathematics Education: A180 ESC, 801-422-1735, office@mathed.byu.edu
 - Physics and Astronomy: N-283 ESC, 801-422-4361, physics_office@byu.edu
 - Statistics: 2152 WVB, 801-422-4505, statsec@stat.byu.edu

Prepare Early for a Career

- Check out Careers & Experiential Learning in 1134 WSC and at careers.byu.edu.
- Consider doing an internship.
 - Attend the STEM and Career Fairs held in fall and winter semesters.
 - Talk to your department about internship opportunities.
 - Use LinkedIn and Handshake (see flyer in this packet) to connect with alumni and apply for jobs/internships. BYU Connect is another great resource for networking (connect.byu.edu).
 - Talk with the college Career Director who can help you search for internships as well as assist you with many other career related strategies (see first page of this packet).
- Consider taking StDev 317 (Career Strategies) your junior year.
- Consider taking either Chem 502, CS 502, Geol 502, Math 502, PHSCS 502, or STAT 502 (1-credit Networking Class). Class is held for 1 hour each week.

BYU Earth & Space Science Education BS

Requirements / Prerequisites

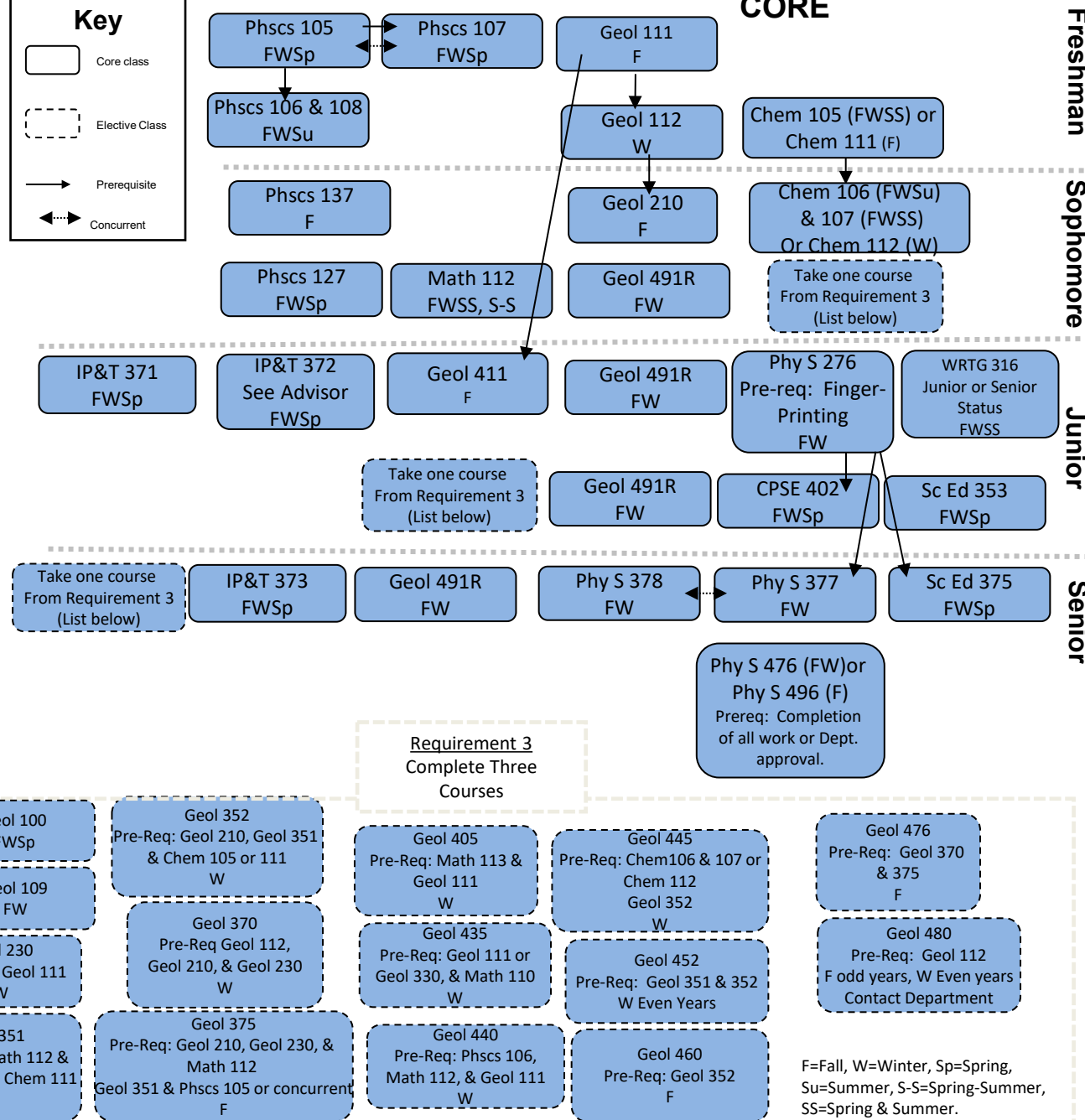
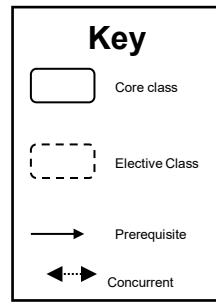
2025-2026 Academic Year

Major (83-85 Hours)

- Admissions into the major or minor requires the following 1) 2.7 minimum high school/college GPA (be in the average of 3.0 for cohort), 2) fingerprint background check, 3) a cohort average ACT score of 21.25 (17 minimum) in reading, average cohort score of 21.25 (17 minimum) in math, and an average cohort writing score of 6.60 (5 minimum or completion for the first-year writing requirement) **or** a SAT average cohort reading score of 543.33 (435 minimum), average cohort math score of 532.5 (426 minimum), and an average cohort essay score of 5.30 (4 minimum). Anyone who has not taken the correct ACT or SAT tests will need to take the Praxis Core tests and receive a 165 (132 minimum or completion of the first-year writing requirement) for writing, 162.14 (130 minimum) for math, and 168.06 (134 minimum) for reading.
- Grades below C in professional education courses or content courses will not be accepted in the teaching major or teaching minor. Maintain minimum 2.7 (3.0 for cohort) GPA to qualify for student teaching.
- Complete the following: Geol 111, Geol 112, Geol 210, Geol 411.
- Complete the following (2 credit hours): Geol 491R
- Complete 3 courses from the following: Geol 100, Geol 109, Geol 230, Geol 351, Geol 352, Geol 370, Geol 375, Geol 405, Geol 435, Geol 440, Geol 445, Geol, 452, Geol 460, Geol 476, Geol 480.
- Complete either Chem 105, Chem 106, and Chem 107, or Chem 111 and 112.
- Complete the following: WRTG 316, Math 112, Phscs 105, Phscs 106, Phscs 107, Phscs 108, Phscs 127, Phscs 137
- Complete the Professional Education Component: CPSE 402, IP&T 371, IP&T 372 (see advisor), IP&T 373, Phy S 276, Phy S 377, Phy S 378, Sc Ed 353, Sc Ed 375. Note: FBI clearance is required for Phy S 276.
- Complete 12 hours from the following: Phy S 476 or Phy S 496.

Minor (23 hours)

- Grades below C in professional education courses or content courses will not be accepted. Teacher candidates must have a 2.7 cumulative GPA.
- Complete Geol 111, Geol 112, Phy S 377
- Complete 8 hours from the following: Geol 100, Geol 109, Geol 210, Geol 351, Geol 352, Geol 370, Geol 375, Geol 405, Geol 411, Geol 435, Geol 440, Geol 445, Geol 452, Geol 460, Geol 480, Geol 546
3. Complete Geol 477R





BYU's own job board. Employers who want to hire BYU graduates or offer internships to current students post job openings to this website and students apply. Just like LinkedIn, employers can view student profiles and students can network as they apply for jobs and internships



Login to handshake.byu.edu >>> BYU Net ID

**you do not need to create an account, just sign in with your BYU information*

HOW TO MAKE THE MOST OUT OF HANDSHAKE:

1. COMPLETE YOUR PROFILE

- Upload your resume and it will auto-fill in your profile
- Completed profiles tailor your Handshake experience
- Information from your transcript is already uploaded
- Fill in the Summary/Bio section
- Fill in your past jobs and experiences, including all the bullet points you use on your resume
- Add a professional headshot and background photo

Remember: every word in your profile will be searchable by students and employers

4. EXPLORE FELLOW STUDENTS

- “Students” tab
- Search for fellow BYU students to view their profiles and job positions.

5. ATTEND EVENTS

- The “Events” tab will be your key to attending info sessions, interviews, and Career Fairs
- The “Calendar” tab under “Events” will show you what events are coming soon
- Make sure to save events you are interested in or RSVP so you do not forget to attend
- Spread the word to your friends on social media

6. DOWNLOAD HANDSHAKE APP

- Search: “Handshake” not “Handshake Career Services”
- Input your BYU e-mail address: netID@byu.edu (it will forward emails to the e-mail you have on file with BYU)
- Handshake will send you a link via e-mail to enable your account in the app
- Navigate the app to perform all the functions of the website that have been previously mentioned

7. VISIT THE CAREER STUDIO

- Freshen up your resume, cover letter, or LinkedIn
- Receive networking help
- Practice interviewing with a mock interview
- Meet with a full-time Career Director in your field

8. GET A JOB, RING THE BELL

- Once you're hired, stop by the Career Studio to ring our Victory Bell and get a picture for the Victory Board



employers are
5X MORE LIKELY
to view a profile that has
at least one job/skill/organization

2. APPLY FOR JOBS

- Search for job titles, employers, or skills
- Apply for interesting jobs that meet your skill set

3. RESEARCH COMPANIES

- Under the “Jobs” Tab there is an “Employers” Tab
- Search for keywords or locations to find companies that are the right fit for you
- Plan to attend their info sessions on BYU Campus, connect with them at Career Fairs, or set up informational interviews to learn more

Remember: when looking at companies or jobs, Handshake will tell you what other BYU students have worked there. Use this resource to network and discover more information!