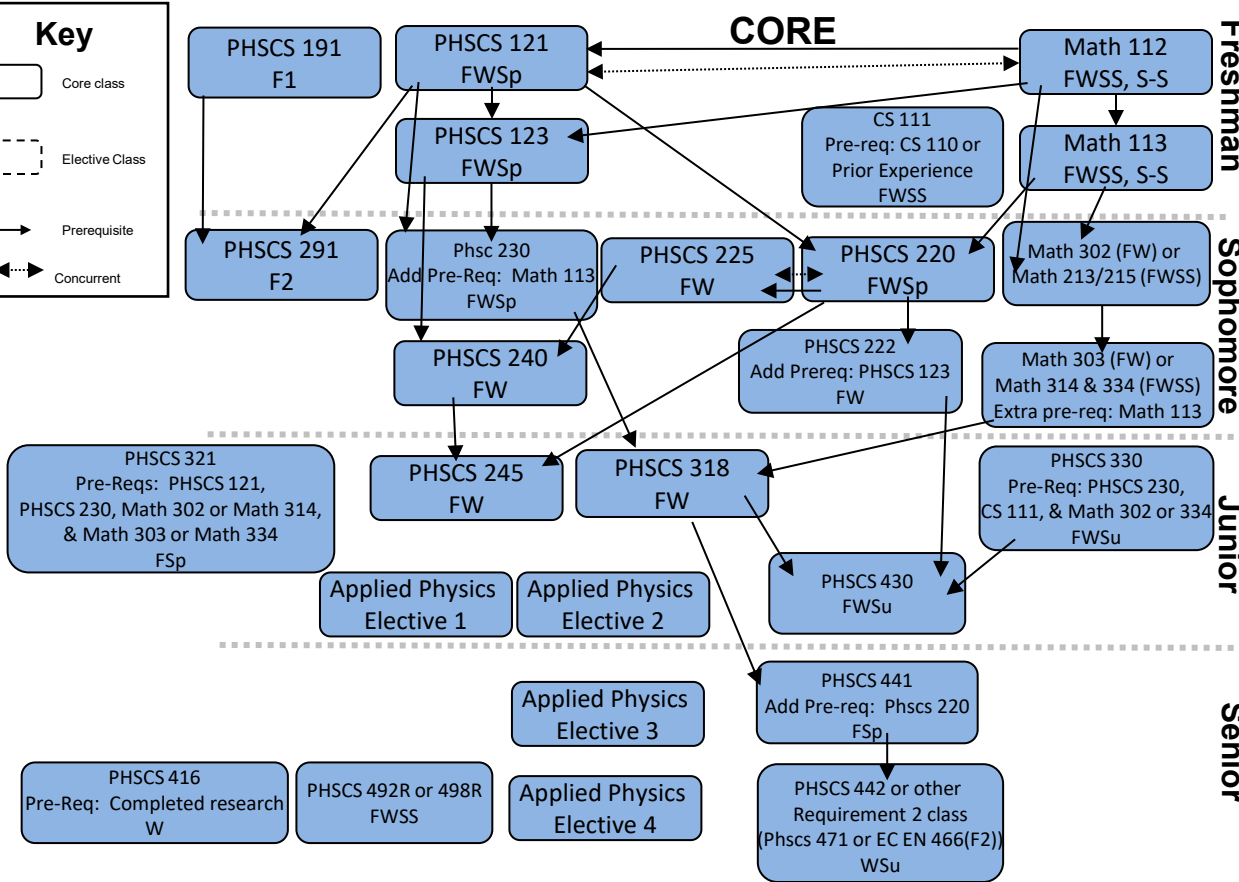
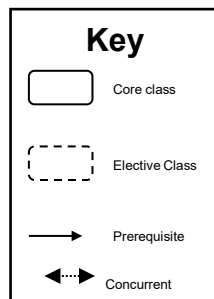


# BYU Applied Physics BS Requirements / Prerequisites 2025-2026 Academic Year

## Major (62-64 Hours)

- No more than 3 Hours of D credit is allowed in major courses.
- Complete the following: CS 111, Math 113, PHSCS 121, PHSCS 123, PHSCS 191, PHSCS 220, PHSCS 222, PHSCS 225, PHSCS 230, PHSCS 240, PHSCS 245, PHSCS 291, PHSCS 318, PHSCS 321, PHSCS 330, PHSCS 430, PHSCS 441.
- Complete one of the following: EC EN 466, PHSCS 442, or PHSCS 471.
- After gaining department advisor's approval of courses selected to define an option, complete an additional 12 hours of electives (cannot include any courses already taken above). These 12 hours must consist of a coherent set of upper-division courses with an identified educational goal. Nine hours must be upper division (300 or above); three hours must be 200-level or above.
- Complete one of the following math options: Take either Math 302 and Math 303 OR Math 213, Math 215, Math 314, and Math 334.
- Complete two credits from either PHSCS 492R or PHSCS 498R.
- Take the Physics Major Field Test your last semester.



## Physics Minor

### Minor (20 Hours)

- Complete the following 5 courses: Math 113, PHSCS 121, PHSCS 123, PHSCS 220, PHSCS 222.
- Complete 4.0 hours from the following courses: PHSCS 127, PHSCS 137, PHSCS 167, PHSCS 225, PHSCS 230, PHSCS 240, PHSCS 310, PHSCS 311, PHSCS 318, PHSCS 321, PHSCS 330

After gaining department advisor's approval of courses selected to define an option, complete an additional 12 hours of electives (cannot include core courses in the major). These 12 hours must consist of a coherent set of upper-division courses with an identified educational goal. Nine hours must be upper division (300 or above); three hours must be 200-level or above. See examples of applied physics tracks here: <https://physics.byu.edu/undergraduate/appliedphysics>.