

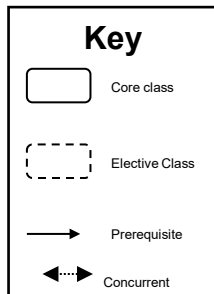
Chemistry Education BS

Requirements / Prerequisites

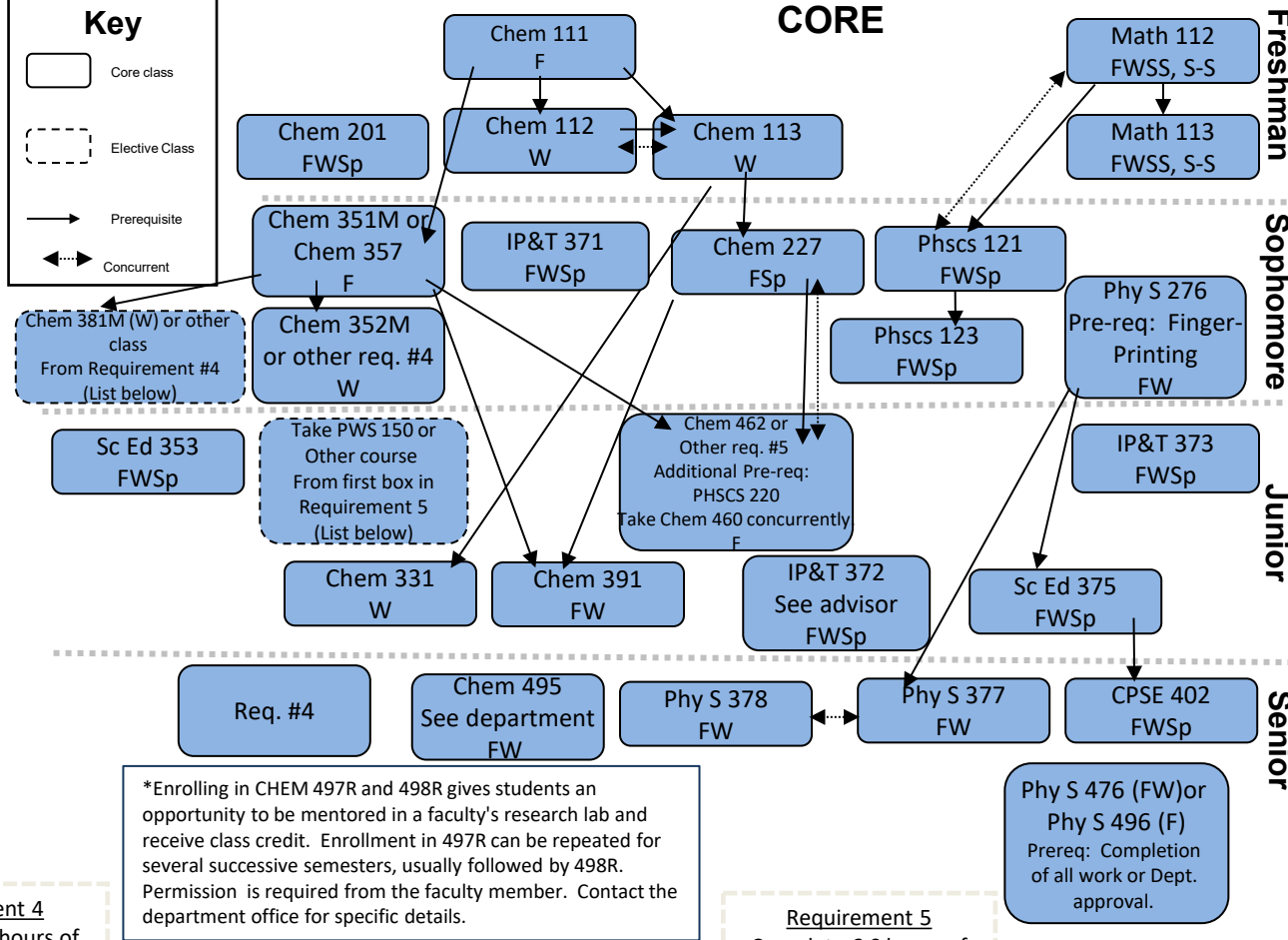
2024-2025 Academic Year

Major (82.5 Hours)

- Admission into the major or minor requires the following: **1)** 2.7 minimum high school/college GPA (be in the average of 3.0 for cohort), **2)** fingerprint background check, **3)** a cohort average ACT score of 21.25 (17 minimum) in reading, average cohort score of 21.25 (17 minimum) in math, and an average cohort writing score of 6.60 (5 minimum) **or** a SAT average cohort reading score of 543.33 (435 minimum), average cohort math score of 532.5 (426 minimum), and an average cohort essay score of 5.30 (4 minimum). Anyone who has not taken the correct ACT or SAT tests will need to take the Praxis Core tests and receive a 165 (132 minimum) for writing, 162.14 (130 minimum) for math, and 168.06 (134 minimum) for reading.
- Grades below C in professional education courses or content courses will not be accepted. Teacher candidates must have minimum of a cumulative 2.7 GPA.
- Complete the following: Chem 111, Chem 112, Chem 113, Chem 201, Chem 227, Chem 331, Chem 391, Chem 495.
- Complete one of the following: Chem 351M or Chem 357.
- Complete the following: Math 112, Math 113, Phscs 121, Phscs 123.
- Complete nine hours from the following: Chem 352M, Chem 354, Chem 381M, Chem 384, Chem 397R, Chem 460, Chem 462, Chem 463, Chem 464, Chem 465, Chem 468, Chem 498R, Chem, 514, HONRS 499R.
- Complete 6 hours from the following electives: One of Biol 100, Biol 130, Cell 120, or PWS 150. Complete Geol 101 or Geol 111. Math 213 and Math 215, Math 290, Math 302, Math 314, Math 334, Phil 423R, Phscs 127, Phscs 137, Phscs 220, Phscs 222, Phscs 225, Phscs 240.
- Complete the Professional Education Component: CPSE 402, IP&T 371, IP&T 372 (see advisor), IP&T 373, Phy S 276, Phy S 377, Phy S 378, Sc Ed 353, Sc Ed 375. Note: FBI clearance is required for Phy S 276.
- Complete 12 hours from the following: Phy S 476 or Phys 496.



CORE



*Enrolling in CHEM 497R and 498R gives students an opportunity to be mentored in a faculty's research lab and receive class credit. Enrollment in 497R can be repeated for several successive semesters, usually followed by 498R. Permission is required from the faculty member. Contact the department office for specific details.

Requirement 4
Complete 9.0 hours of the following Electives

Requirement 5
Complete 6.0 hours of the following Electives

CHEM 352M Pre-Req: Chem 351(M) W	Chem 397R Pre-req: Chem 111, Chem 112, & Chem 113 When taught: Contact Dept	Chem 463 Pre-req: Chem 462 & PHSCS 220 W	CHEM 468 Chem 481 or Chem 381M & PHSCS 220 W	Biol 100, Biol 130, CELL 120, or PWS 150 FWSS (depending on class)	Math 302 Pre-req: Math 113 FW	Phil 423R Pre-Req: Phy S 100 & Phil 300 See Department	PHSCS 222 PHSCS 121, 123, 220 FW	Any Req. #4 course Not used in Req. #4
CHEM 354 Pre-req: Chem 201 and Chem 351 (M) or 357 Take for 1 or 2 credits FWSp	CHEM 460 Pre-req: Math 113 & 213 Take with 462 F	CHEM 464 Chem 462, Chem 201 & chem 227 W	Chem 498R* Pre-Req: Consent & Chem 201 FWSS	Geol 101 (FW) or Geol 111 (F)	Math 314 Pre-Req: Math 113 FWSS	PHSCS 127 FWSp	PHSCS 225 Pre-Req: PHSCS 220 Or concurrent FW	With approval, Certain other courses In physics, geology, mathematics, and biology may be taken to satisfy the elective requirements.
CHEM 381M Pre-Req: Chem 351 (M) W	CHEM 462 Chem 351(M), PHSCS 220, Concurrent with Chem 227 F	CHEM 465 Chem 462, 463, 467 or 468 or concurrent W	CHEM 514 Chem 462 or 468 F	Math 213 & 215 Pre-req: Math 112 FWSS	Math 334 Pre-Req: Math 113 & Math 213 EWSS	PHSCS 137 Pre-Req: Phy S 100 F	PHSCS 240 Phscs 123 & 225 FW	
CHEM 384 Pre-req: Chem 201 & Chem 227 W2	Honrs 499R FWSpSu		Math 290 Pre-req: Math 112 Or concurrent EWSp	Math 213 & 215 Pre-req: Math 112 FWSS	Math 334 Pre-Req: Math 113 & Math 213 EWSS	PHSCS 220 Math 113 & PHSCS 121 FWSp		

Please Note: When Taught is subject to change.

Guide only—please consult MyMAP for full requirements.

Updated 09/11/2024