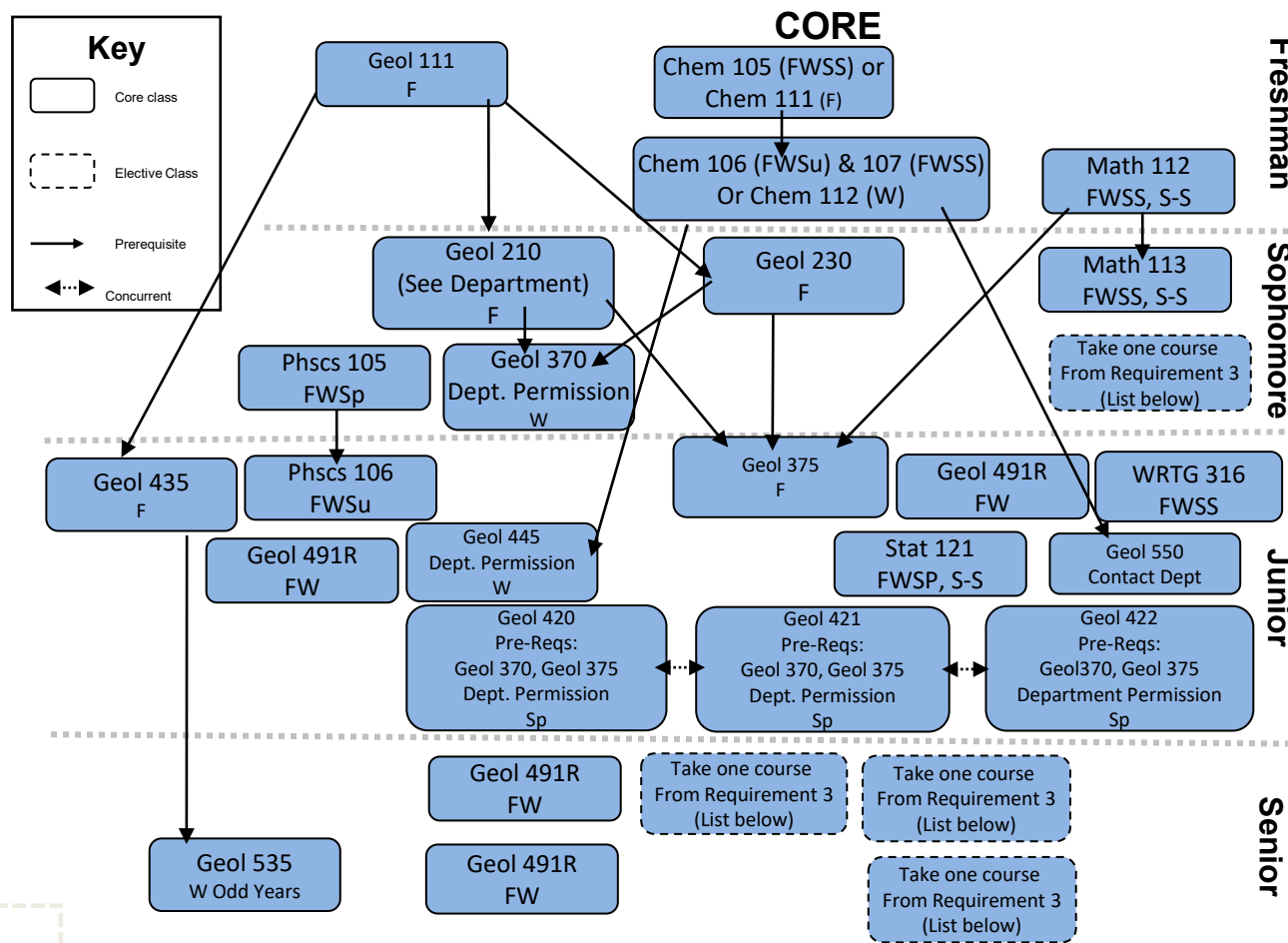


BYU Environmental Geology BS

Requirements / Prerequisites
2024-2025 Academic Year

Major (69-76 hours)

1. Complete the following: Geol 111, Geol, Geol 210, Geol 230, Geol 370, Geol 375, Geol 420, Geol 421, Geol 422, Geol 435, Geol 445, Geol 535, Geol 550.
2. Complete the following (2 credit hours): Geol 491R
3. Complete 4 courses from the following: CE 341, CE 414, CE 331, CE 451, CE 514, CE 531, CE 540, CE 547, CE 551, CE 555, GEOG 313, Geog 413, Geol 330, Geol 351, Geol 352, Geol 405, Geol 411, PWS 282, PWS 283, PWS 305, PWS 306, PWS 365, PWS 366, PWS 375.
4. Complete either Chem 105, Chem 106, and Chem 107, or Chem 111 and 112.
5. Complete the following: WRTG 316, Math 112, Math 113, Phscs 105, Phscs 106, Stat 121.



Requirement 3 Complete Four Courses

CE 341 Pre-Req: CCE 203, CCE 270, & CE 232 FW	CE 451 Pre-Req: Chem 105 F	CE 540 Pre-Req: CE 341 F	CE 555 Pre-Req: Chem 105 F	Geol 330 Pre-req: None FW	Geol 405 Pre-Req: Math 113 & Geol 111 W	PWS 283 Pre-Req: PWS 282 Or concurrent FW	PWS 365 Pre-Req: PWS 305 F
CE 414 F	CE 514 Pre-Req: CCE 170 & CE 414 W	CE 547 Pre-req: CE 341 F	Geog 313 Pre-Req: Geog 213 F	Geol 351 Pre-Req: Math 112 & Chem 111 or 105 F	Geol 411 Pre-Req: Geol 111 or Geol 330 F	PWS 305 Pre-Req: PWS 282 W	PWS 366 Pre-Req: PWS 305 Chem 101 or 105 F
CE 331 Pre-Req: CE 332 & CCE 170 W	CE 531 Pre-Req: CE 331 F	CE 551 Pre-Req: CE 351 F	Geog 413 Pre-Req: Geog 313 W	Geol 352 Pre-Req: Geol 210, 351 & Chem 111 or 105 W	PWS 282 Pre-Req: PWS 283 Or concurrent FW	PWS 306 Pre-Req: PWS 305 W	PWS 375 W Even Years

Please Note: When Taught is subject to change. Guide only—please consult MyMAP for full requirements.

Updated 7/17/2024